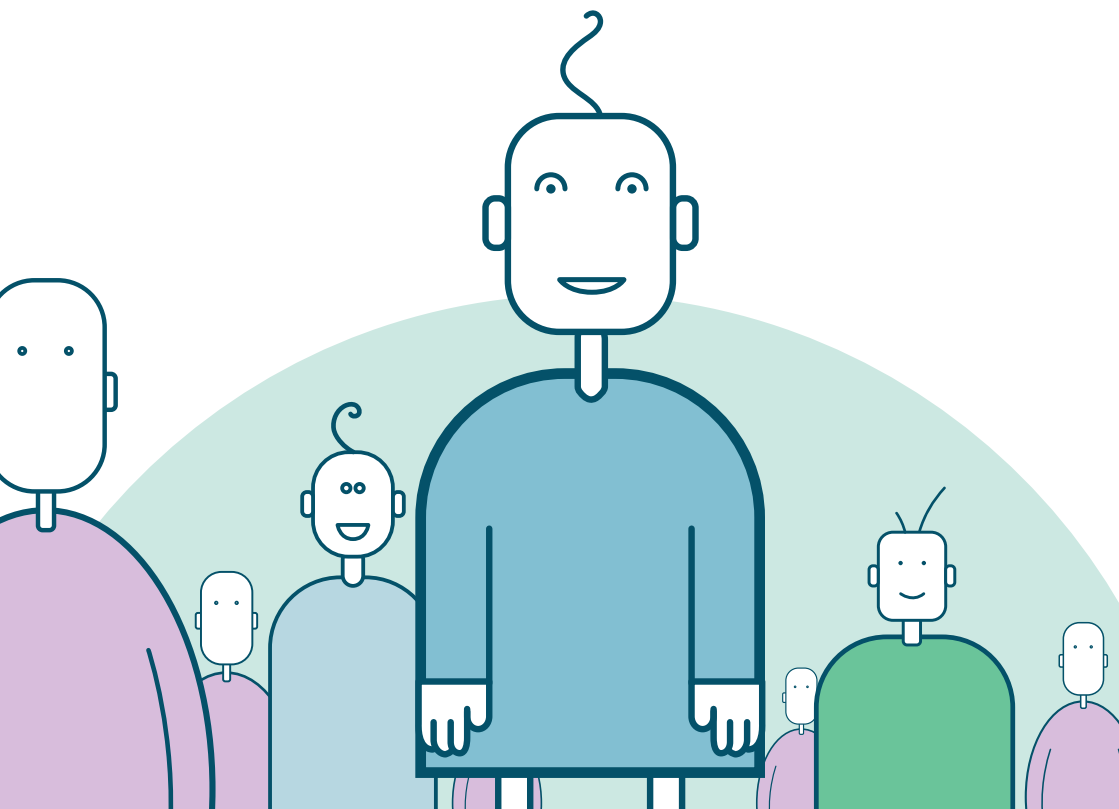


Information about health and care services in the Norwegian Registry for Primary Health Care

From IPLoS to NRPC



IPLOS

If you are applying for or receiving health and care services in your municipality, information will be registered about you and your needs as regards help and assistance. This information is part of your medical records and is confidential. Only those who need access to this information as part of their job will have such access

and they will be subject to a duty of confidentiality.

Some of the information is registered according to a specific standard (IPLOS) and sent to the Norwegian Registry for Primary Health Care (NRPC).

Norwegian Registry for Primary Health Care (NRPC)

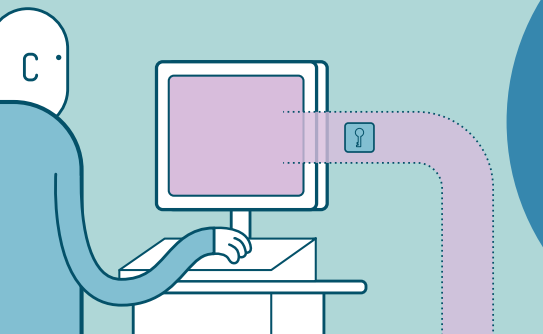
The NRPC will contain information about everyone who receives health and care services from the municipal authority. The registry will contain data from all services that are referred to in the Act on Municipal Health and Care Services (lovdata.no).

The information in the NRPC is intended to help:

- improve the quality of health and care services
- ensure good planning and equitable health services, regardless of gender, location and social status
- provide more information about the effects of treatment and the distribution, causes and development of diseases

What information is sent to the NRPC?

- gender, age and municipality
- household
- needs regarding everyday help and assistance
- needs regarding help and assistance in order to take part in connection with work, education and spare time
- assistance from family or persons in the local community
- assessed by doctor/dental health professionals during the past year
- what services are provided by the municipality
- whether an individual plan has been prepared and whether you have a coordinator
- relevant diagnoses that it is necessary to be aware of in order to provide you with appropriate services.



It is important to note that:

- You name and address will not be registered in the NRPC
- Your national ID number will be stored encrypted and kept separate from your medical data

Who will provide the information?

- You will provide most of the information about your situation to the municipal authority. You have a statutory right to be involved in assessing your needs as regards help and assistance and how the services will be provided.
- If anyone else has to provide information, you must give your consent.
- The municipal authority cannot ask you for information which is of no relevance to your situation.
- In the case of information which you are unable to provide, it may be necessary to contact your relatives. It may also be necessary to request information from other employees of the municipal authority, such as your GP, or a hospital.

How will the data be safeguarded?

- National ID numbers are stored in encrypted form.
- Those who process data in the NRPC are subject to a duty of confidentiality.
- Personally identifiable medical data from the NRPC may only be disclosed when the necessary permits have been obtained.
- Only a few specifically authorised employees are permitted to process requests for access.

Access to your own medical data

You have a right to:

- access your own medical data in the NRPC
- be told who has received medical data about you and what the data was used for
- ask the case officer questions about data that is registered about you and report errors in the data

If you request access to your own medical data, the information you will be sent may not be easy to understand. We therefore encourage you to contact a doctor, medical institution or your contact person in the municipal authority, both for help to complete the form and to interpret the reply you get.

Opting out

You can choose not to allow medical data about you to be disclosed by the NRPC together with your national ID number or your medical data to be disclosed for certain purposes.

The NRPC will expand the amount of knowledge that is available to us and provide a better basis for analyses and research. It will be used to develop and improve municipal health services. If many people decide not to allow data to be disclosed, the underlying basis for this knowledge will be weakened. We hope you will have confidence in our ability to treat your data securely and correctly.

For more information about IPLOS and the NRPC, visit www.helsedirektoratet.no

The Directorate of Health is the data controller for the Norwegian Registry for Primary Health Care (NRPC).

Norwegian Directorate of Health
Universitetsgata 2
Pb. 7000 St. Olavs plass
Tel.: (+47) 810 20 050.
e-mail: postmottak@helsedir.no
www.helsedir.no