

Sustainability assessment of food

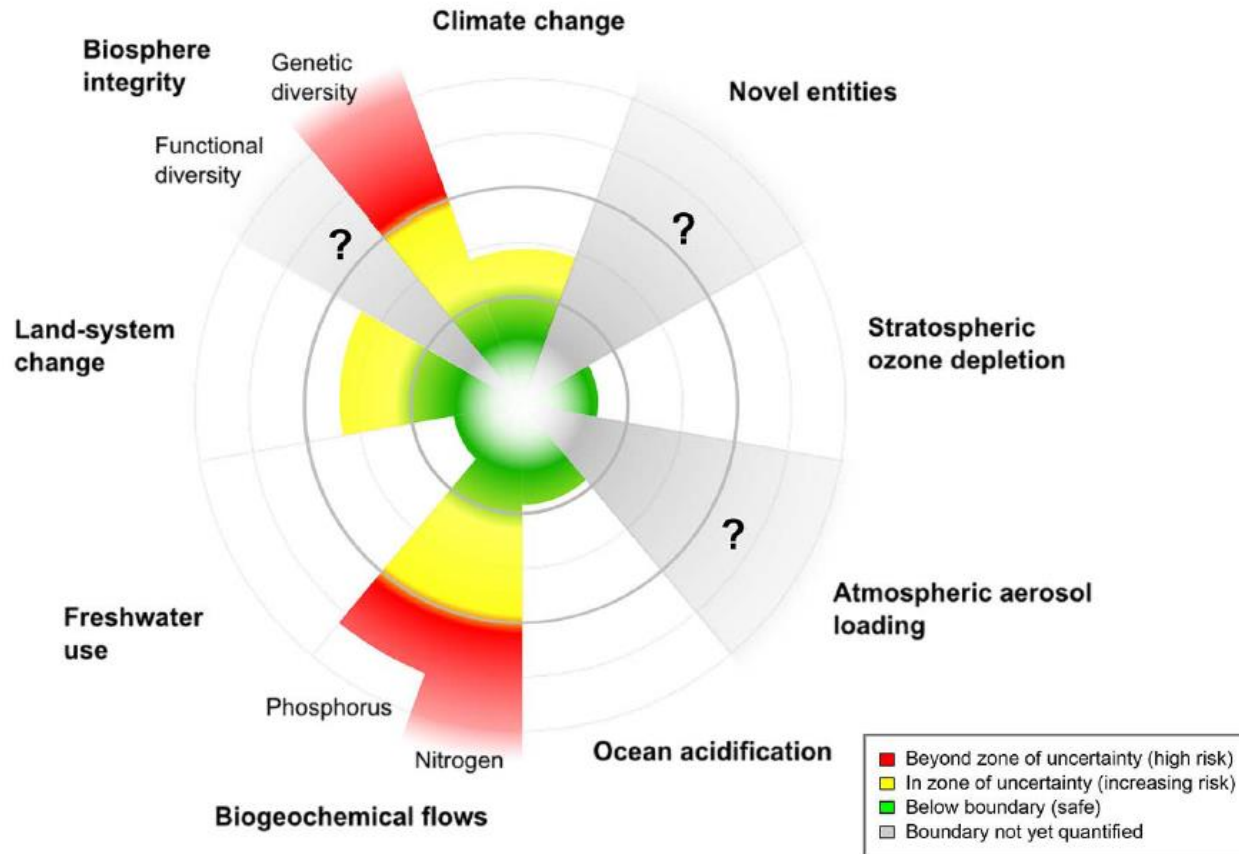
Michael Hauschild (mzha@dtu.dk)

Quantitative Sustainability Assessment, QSA

DTU Management

Technical University of Denmark

Planetary boundaries



Steffen W, Richardson K, Rockström J et al. (2015b) Planetary boundaries: Guiding human development on a changing planet. *Science* 347(6223), 736-746

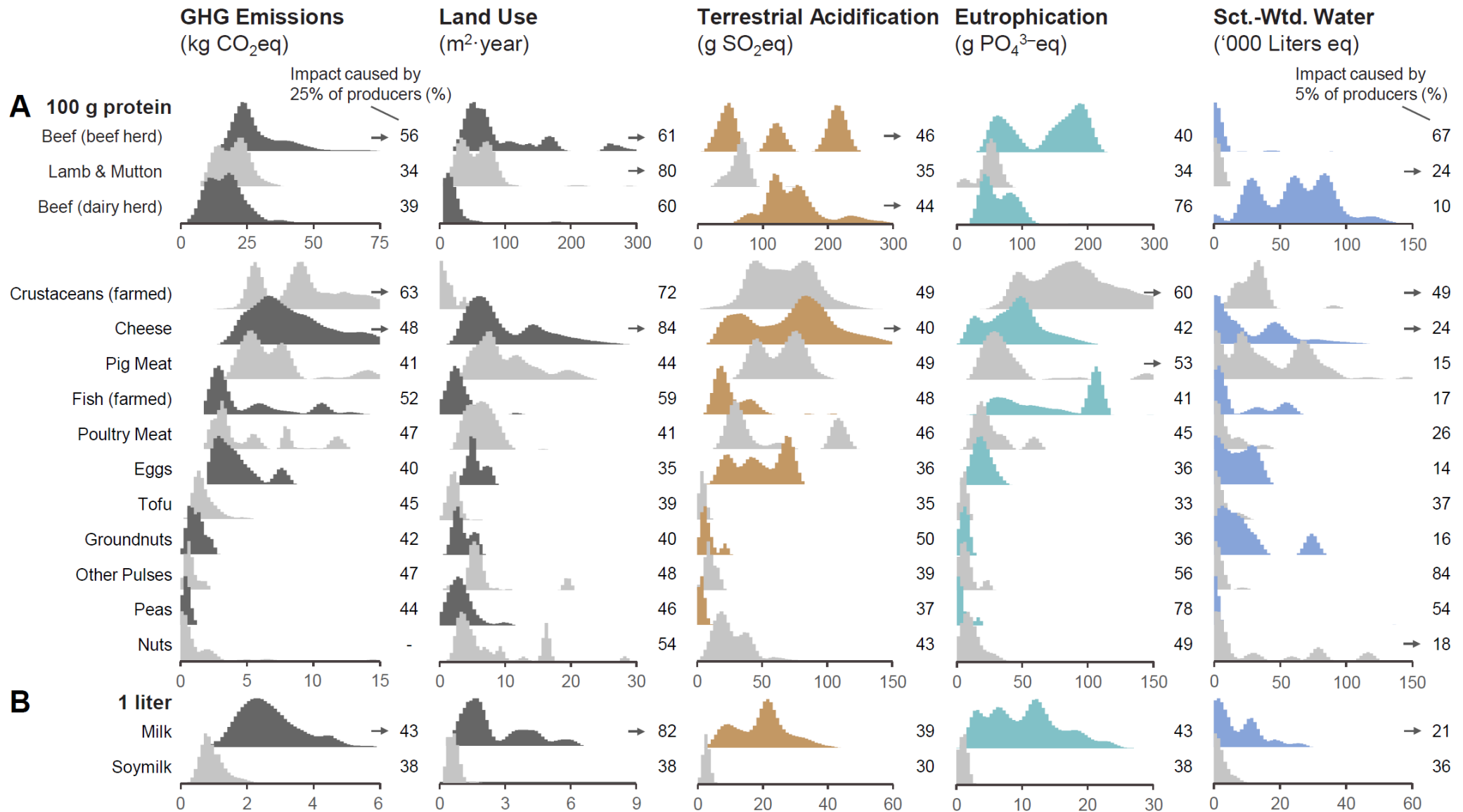
Sustainability requires a life cycle perspective



A systems perspective is needed;

- Adapting a life cycle perspective to avoid problem-shifting
- Considering all relevant types of impacts
- Addressing trade-offs between impacts (and sustainability dimensions)

Sustainability involves multiple impacts



Poore and Nemecek (2018) Reducing food's environmental impacts through producers and consumers. Science 360, 987-992

Sustainability requires an absolute perspective

- From better to good enough
- Feeding a growing population and growing middle class with dramatically less impact
 - Our climate efficiency must increase 3 times by 2030 to stay within the planet's limits and by 2050 we must be climate neutral
 - ... and then there is the biodiversity crisis
- What does this mean for future food production?

